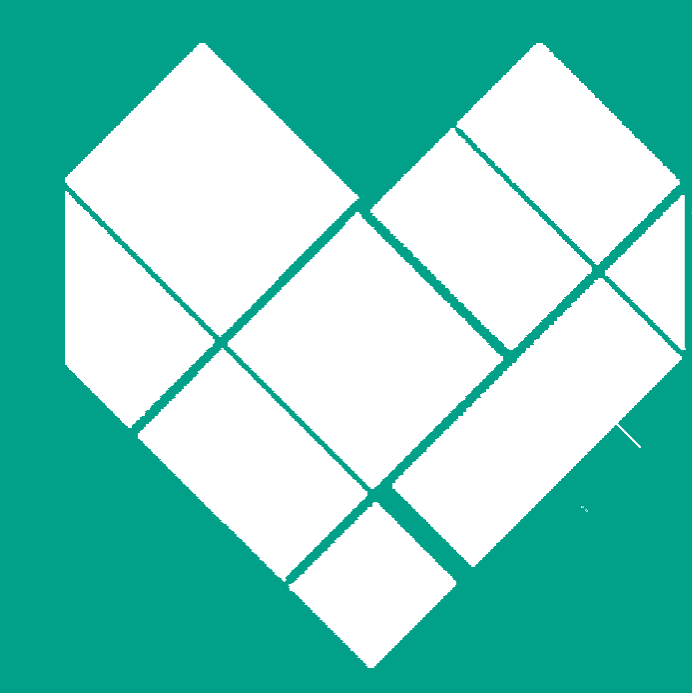




cosmos
nature
lane ♥

2022 Laneway Park-ing

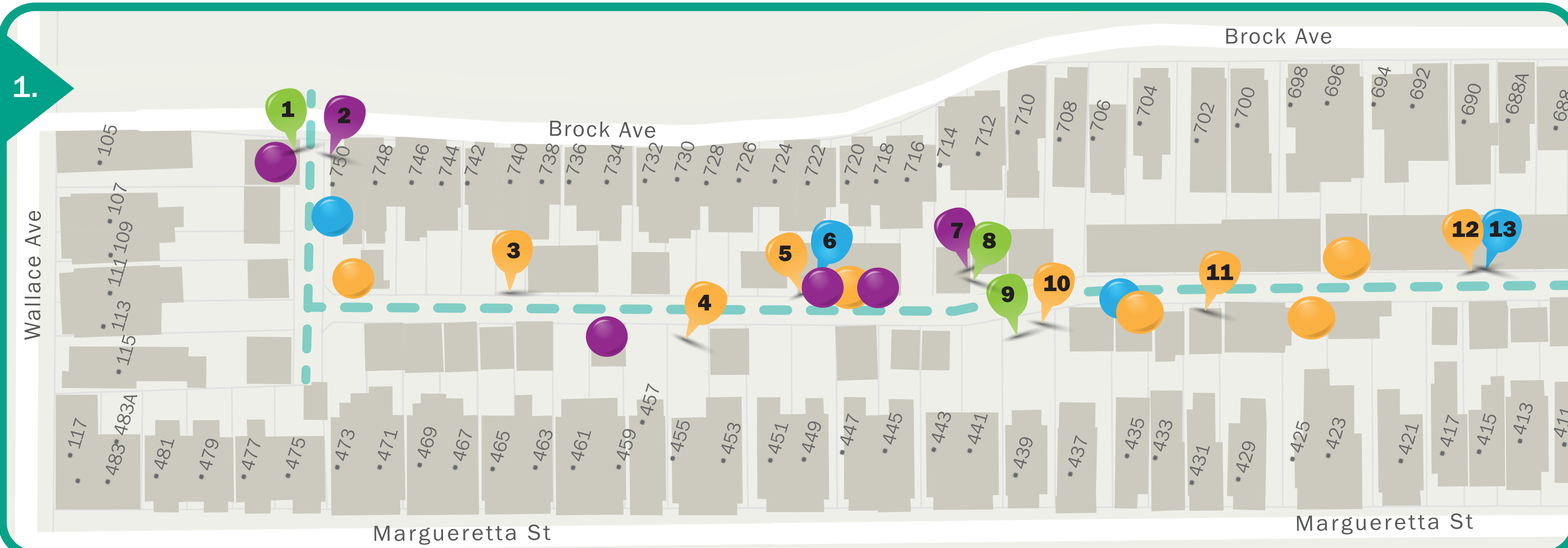
Cosmos Nature Lane Master Plan



**THE
LANEWAY
PROJECT**
CREATING LANEWAYS THAT WORK

September 12 2022

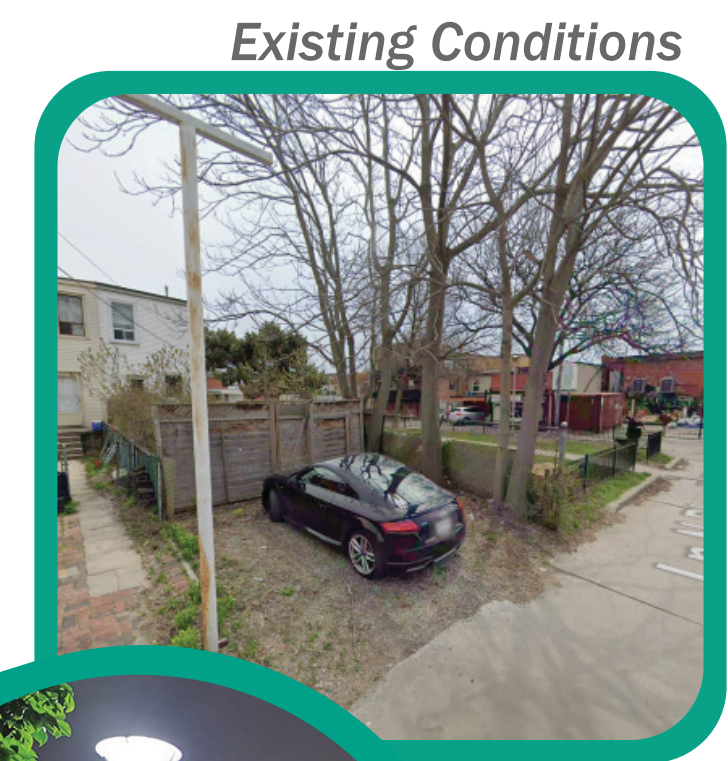
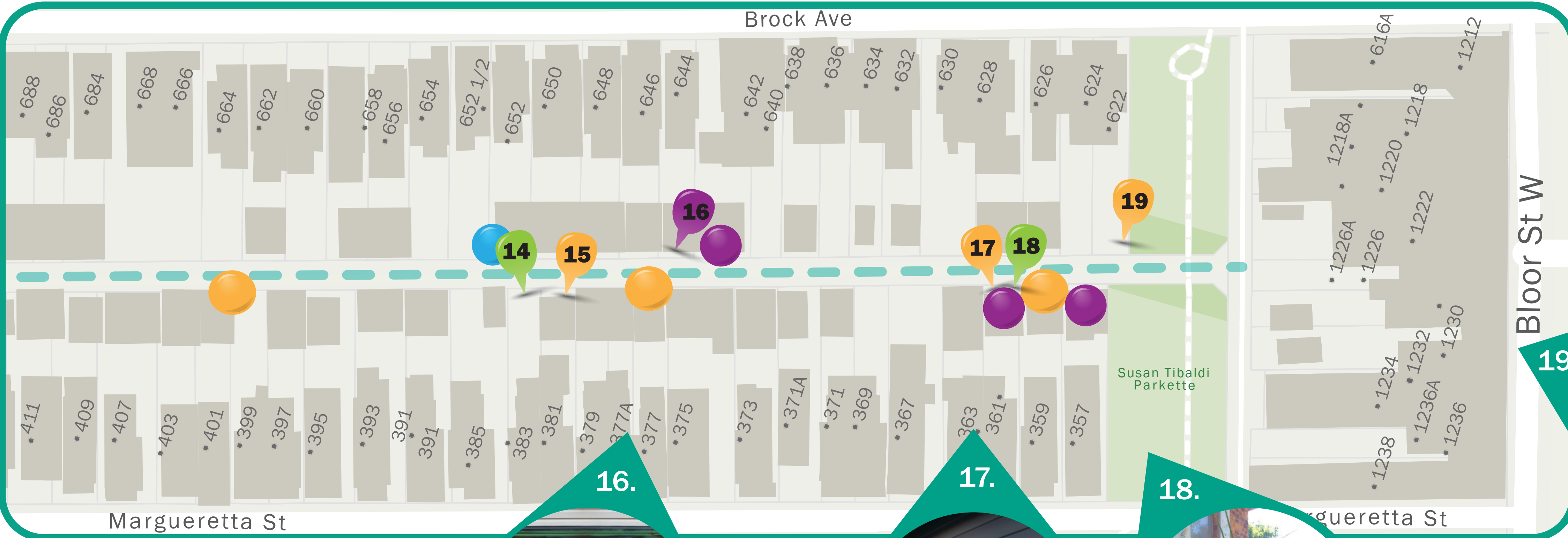
Cosmos Nature Lane Laneway Parking Master Plan



Existing Conditions

Intervention Descriptions

1. Narrow planter along the entrance of the laneway to provide a permanent/secure space for plants to grow.
2. Mural across from the existing mural at the entrance of the laneway to create a welcoming environment.
3. Garage/fence lighting
4. Garage lighting
5. Garage lighting
6. Painted rain barrel
7. Mural on south concrete block wall with safety, traffic calming theme
8. Planter to replace the chainlink fence
9. Plantings along curb or hanging planters on fence
10. Fence lighting
11. Garage lighting
12. Garage lighting
13. Painted rain barrel
14. Square or rectangular planter along fence
15. Garage lighting
16. Mural on the garage door to remove the graffiti and add visual interest to the space.
17. Lighting on rear garage facade to prevent littering.
18. Smaller square planters framing garage door
19. Solar lighting at the south end of the lane to enhance safety for the community at night.



Existing Conditions



19.

Legend

- Existing Lighting
- Existing Mural
- Existing Rain Barrel

Proposed Improvements

- Lighting Improvement
- Mural Improvement
- Planter Improvement
- Rain Barrel Improvement



16.



17.



18.



Existing Conditions



Existing Conditions



Existing Conditions

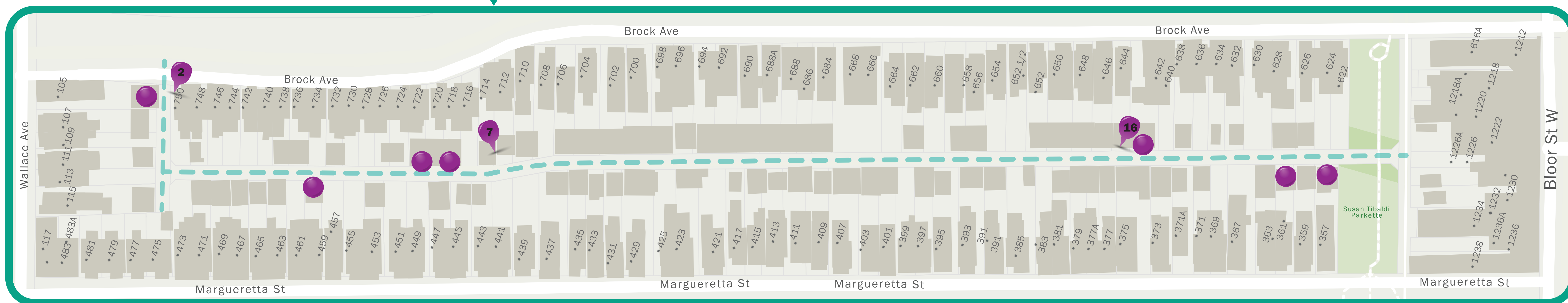
Cosmos Nature Lane Laneway Parking Intervention | Murals

(7) 712 Brock Ave



Potential Mural Themes

Traffic calming, safety, colourful and inviting



(2) 755 Brock Ave



Potential Mural Themes

Welcoming, gateway mural, colourful and inviting

(16) 644 Brock Ave



Potential Mural Themes

Science, ecological cycles, insects or patterns

Cosmos Nature Lane Laneway Parking Intervention | Lighting

(3, 4, 5, 11, 12, 15, 17) Garage Lighting

Motion sensing lights

Garage security lighting

Decorative wall sconces



Brightest

Softest

(10, 3) Fence Lighting

Motion sensing lights

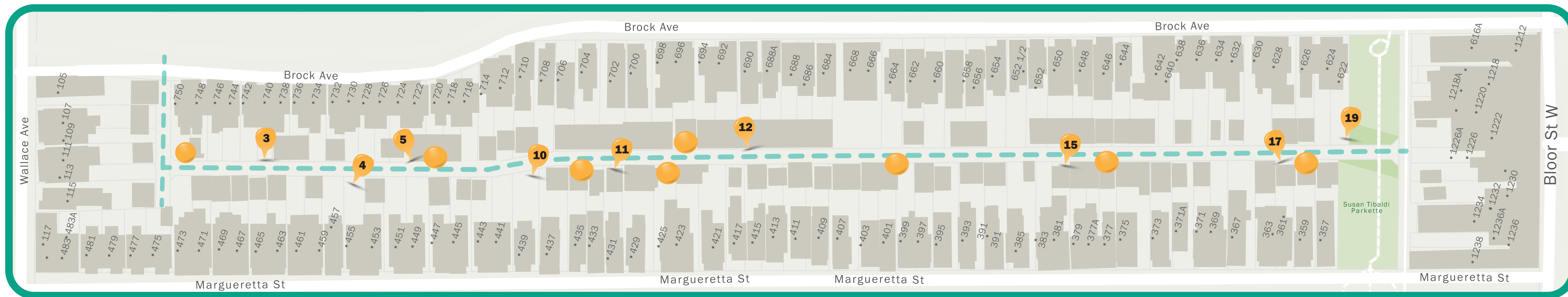
Decorative wall sconces

Soft globe lighting



Brightest

Softest



Key considerations for lighting improvements

- All lighting must be installed on private property - no lights can hang over the street (City of Toronto property)
- Solar lights will be used to provide sustainable, easy to install lighting
- Lighting options provide different levels of brightness
- Mounted lights are less prone to vandalism, whereas string lights and moveable lights can be broken more easily

(19) Freestanding or Pole Lighting

Solar streetlights

Post lights with planters

String lights in trees



Brightest

Softest

Cosmos Nature Lane Laneway Parking Intervention | Greening

(1) 105 Wallace Ave

Existing Conditions



Key considerations

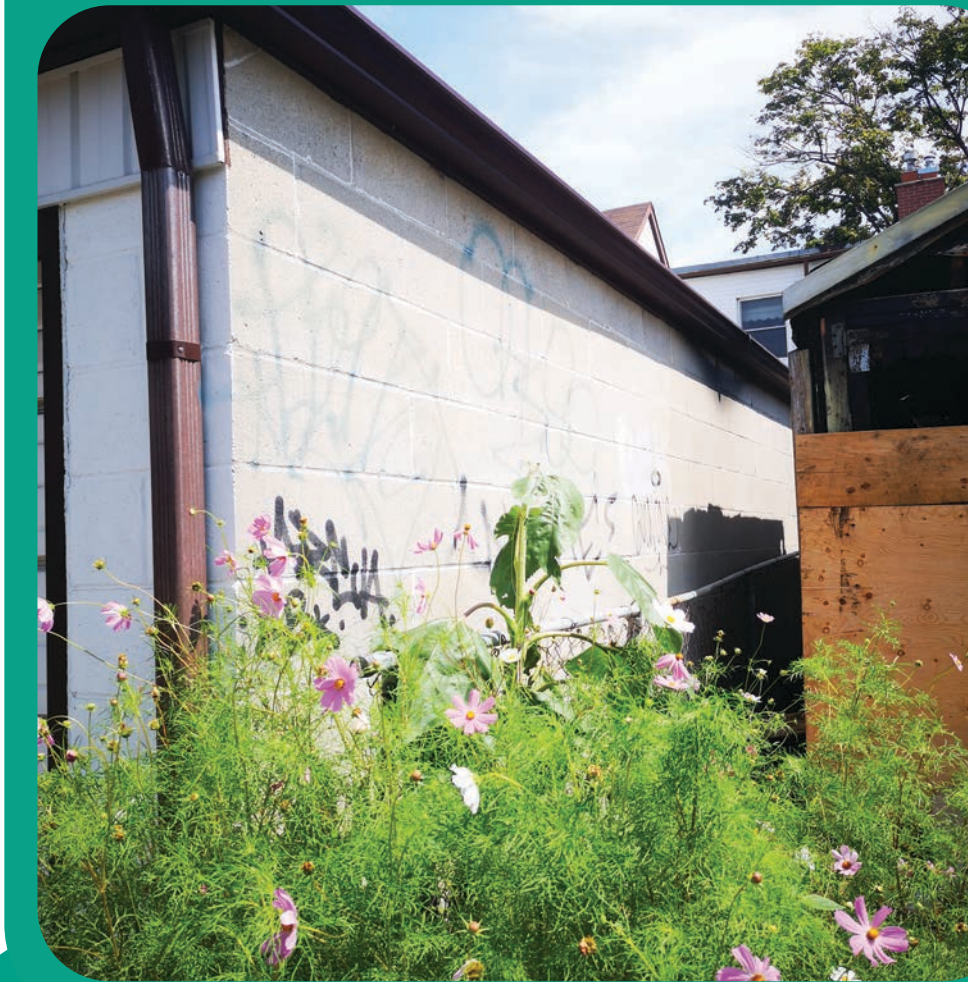
- Minimal space between curb and fence
- Plantings and planter to compliment existing mural

Possible Improvements



(8) 712 + 714 Brock Ave

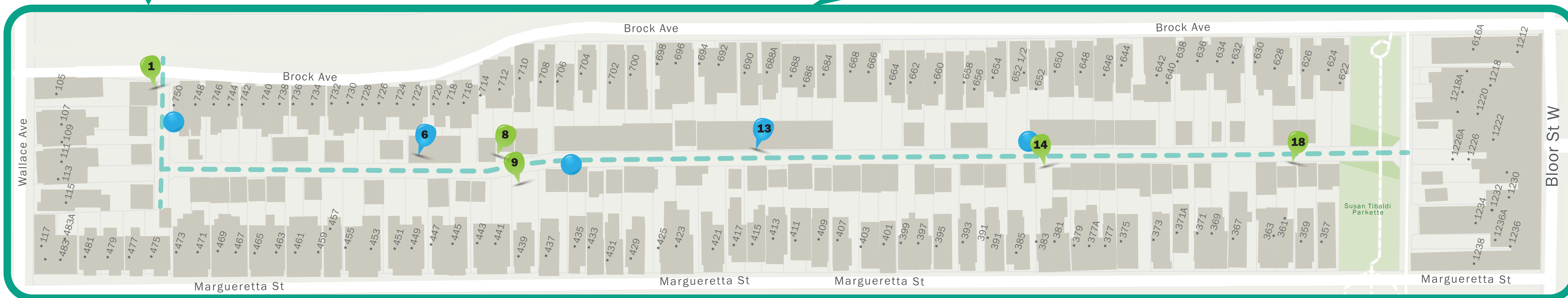
Existing Conditions



Key considerations

- Maintaining the buffer the existing chainlink fence provides
- Integration with the planned mural

Possible Improvements



(9) 439 Marguretta Ave

Existing Conditions



Key considerations

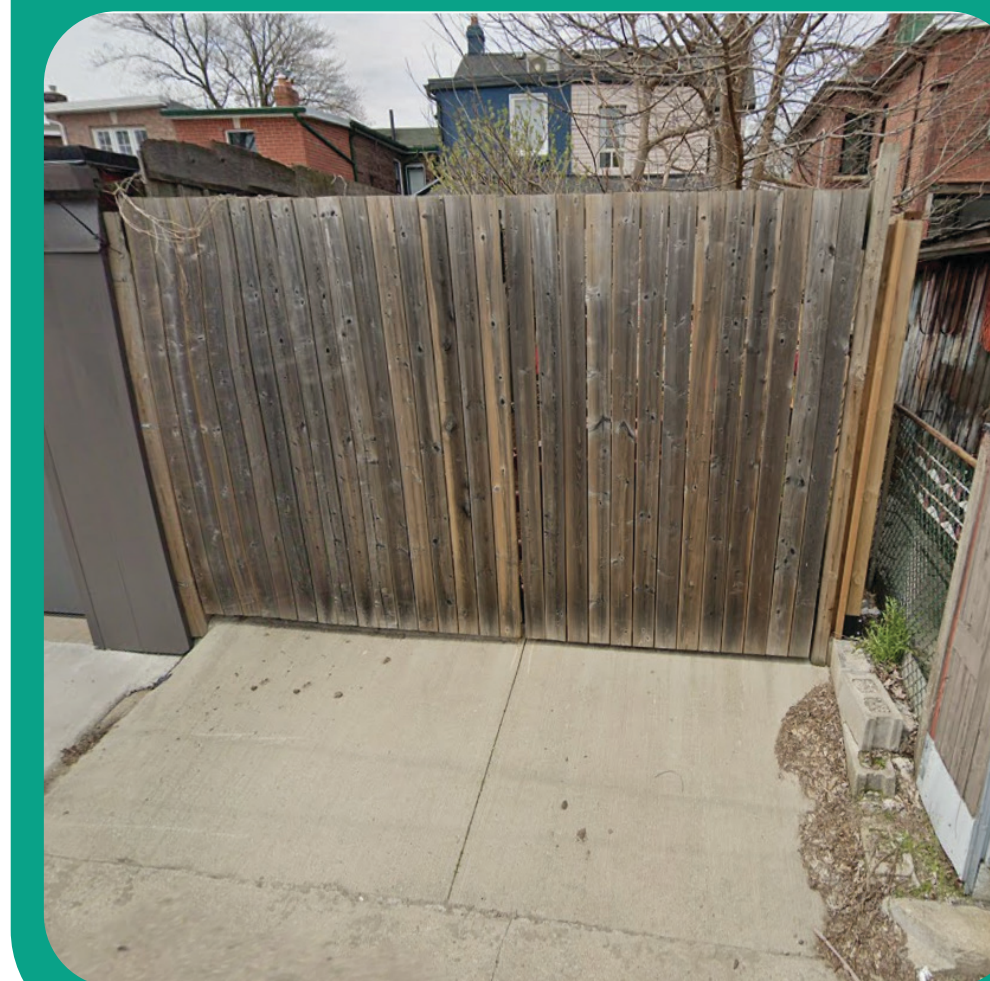
- Minimal space between curb and fence
- Insulation or annual maintenance of hanging baskets
- Integration with fence lighting

Possible Improvements



(14) 383 Marguretta St

Existing Conditions



Key considerations

- Allowing access to the lane, if required
- Possible integration with the planned lighting improvements at 381 Marguretta

Possible Improvements

